



*Biocarbon Summit  
Seattle, WA  
June 10 2013*

*Context for Biocarbon Issues in  
The Intertwine Region*

Mike Houck, Urban Greenspaces Institute

**Context**

*Urban Biodiversity Is  
Not An Oxymoron*

# DIFFERENT SCALES = DIFFERENT ANSWERS

*Gap Analysis*

Low  
Richness

Hi  
Richness



- *Same 57 species*
- *Same Coarse Filter*
- *Different MMU*

*Metro Gap*

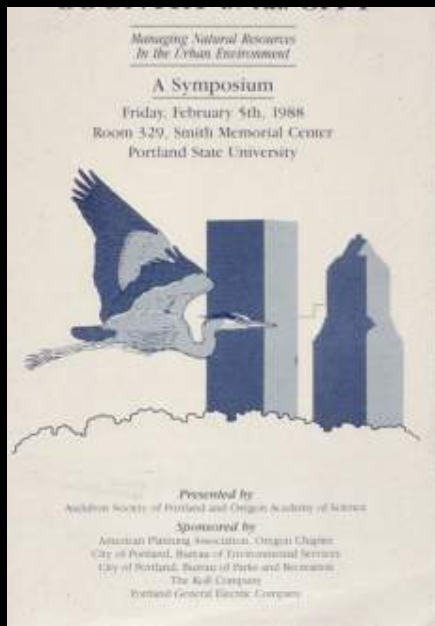
Pond Turtle



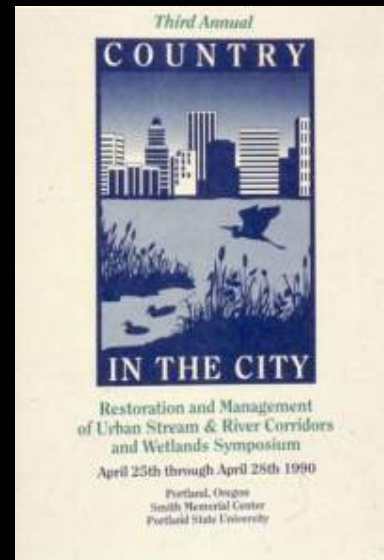




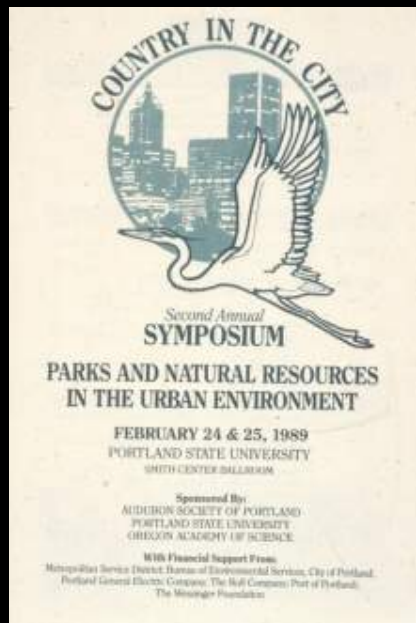




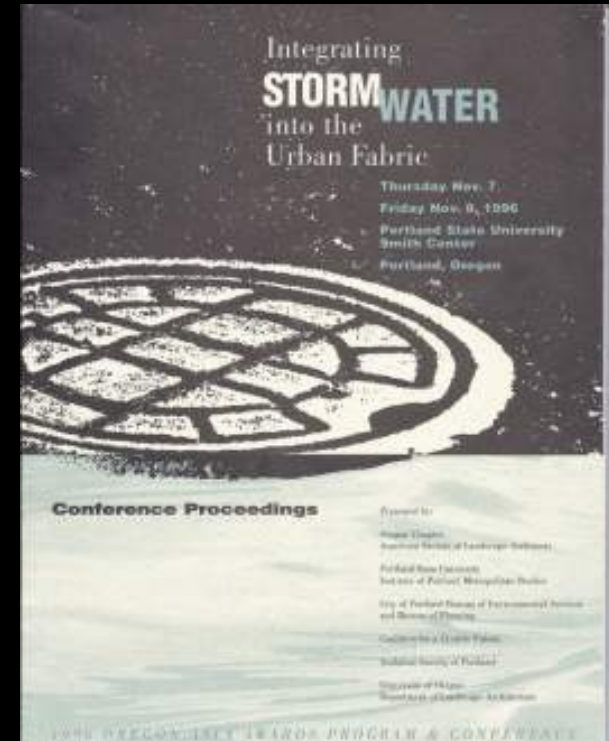
1988



1990



1989



1996

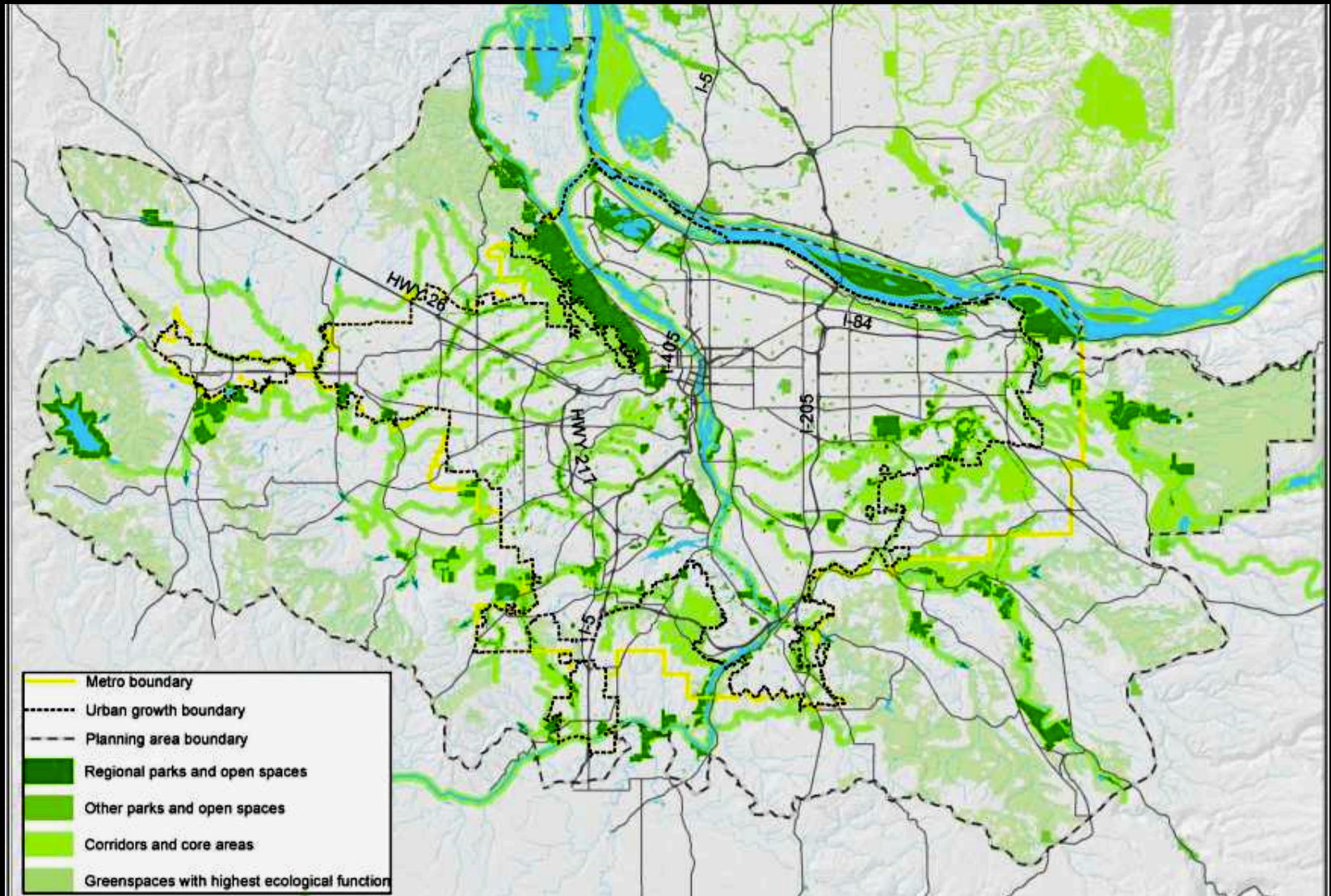




July 22, 1992

Metropolitan Greenspaces  
Master Plan  
adopted by Metro Council

# Regional Parks and Greenspaces





# Natural Areas, Parks & Streams Bond Measures, 1995 & 2006

\$363 million



Willamette Narrows

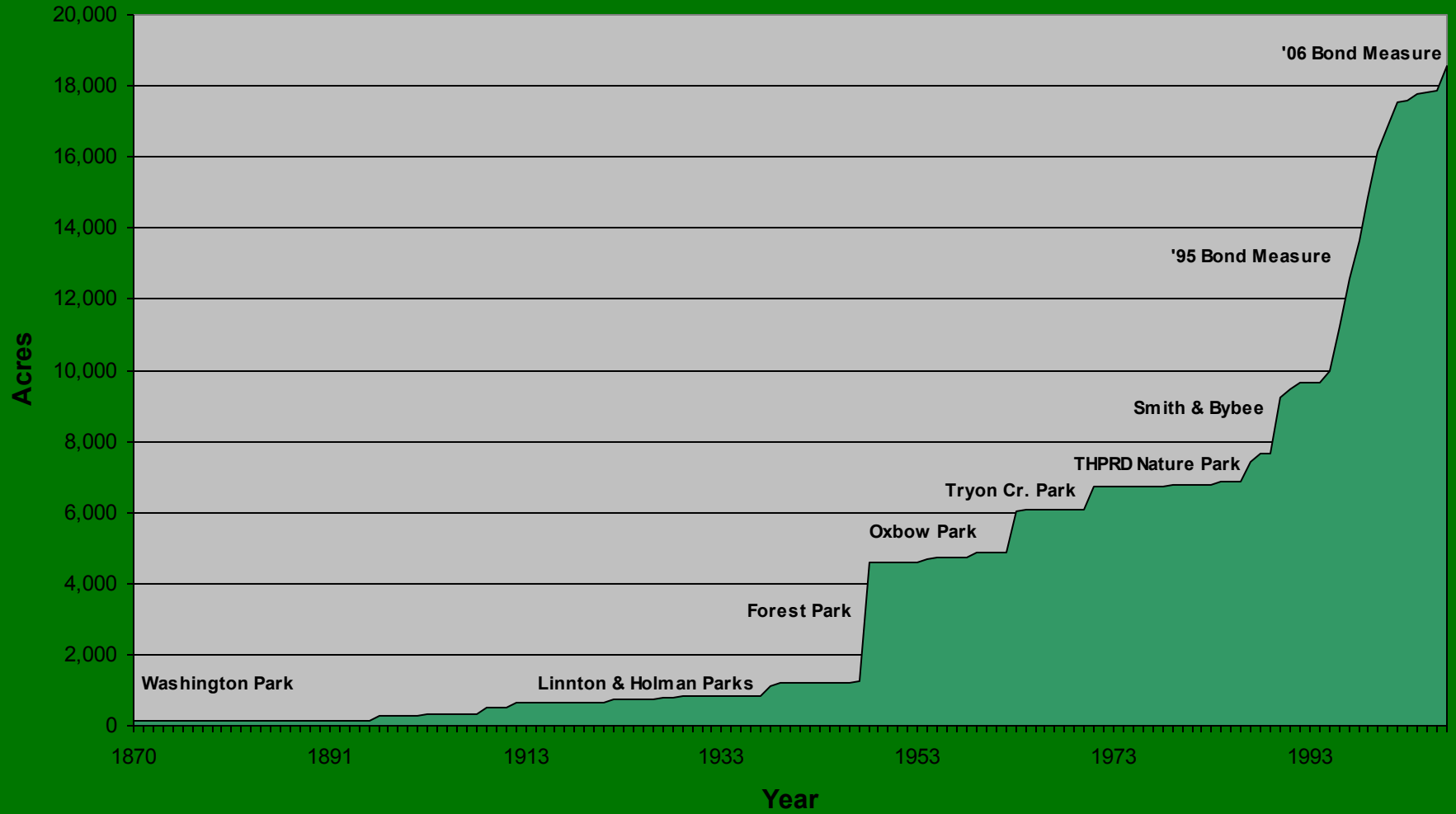


Mt Talbert



Chehalem Mountain

## Natural Areas in the Metro Region





# The Intertwine Vision

Exceptional interconnected system of parks, natural areas, and trails, equitably throughout Portland-Vancouver region



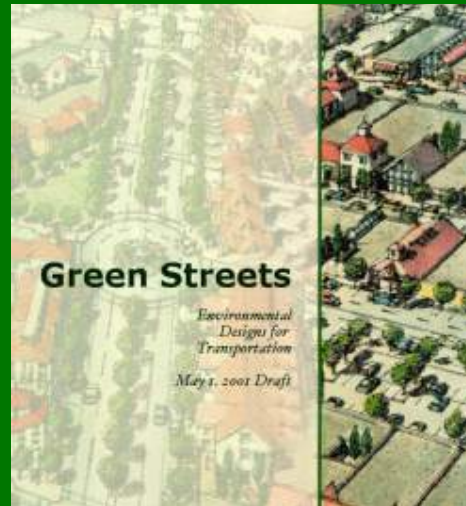


*“Someday, all this will be infrastructure.”*

**Drivers**



The System is an essential part of the urban the region's Green Infrastructure.



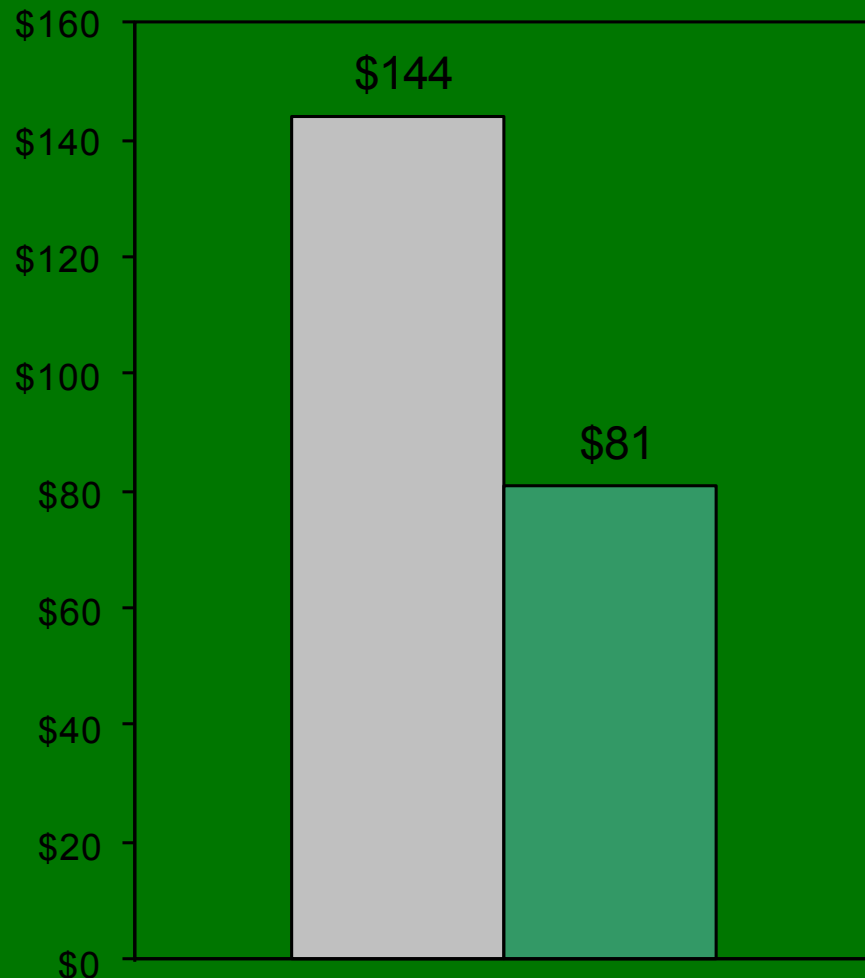


# GREY to GREEN

## Portland's Focus on Green Infrastructure & Ecosystem Services

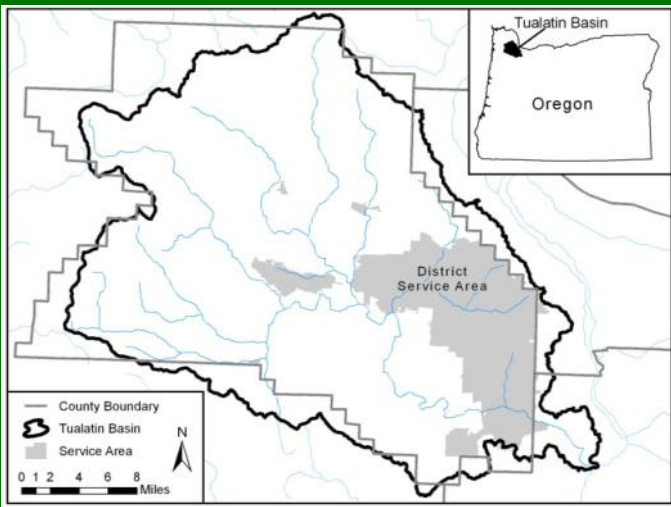
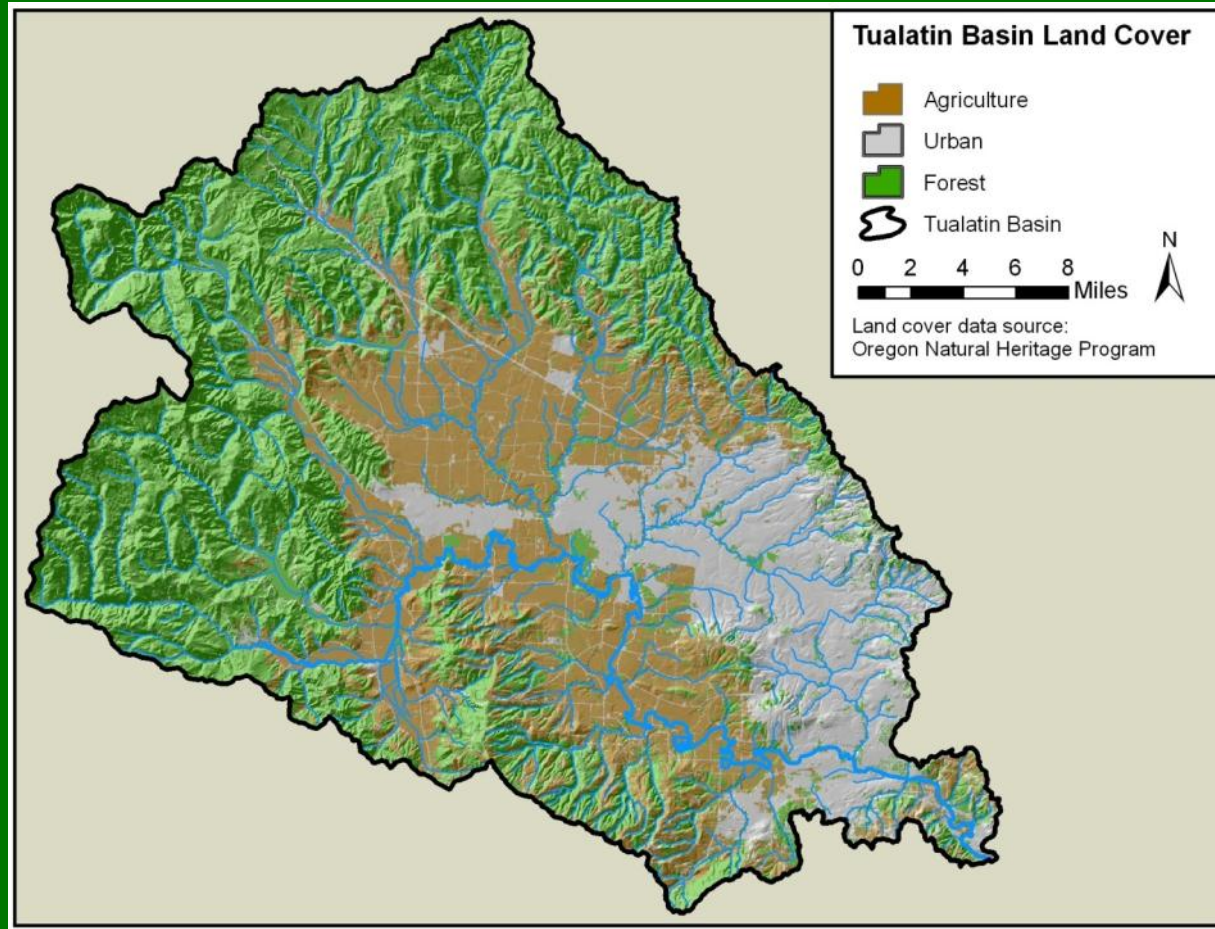
*“stormwater is a resource that adds water quality benefits and improves livability, (not) a waste that is costly to manage and dispose of.”*

# Portland Bureau of Environmental Services Tabor to the River Brooklyn Creek Basin



*Integrating Grey  
solutions with Green  
solutions will save \$63  
million*

# Tualatin River Watershed



# **Clean Water Services Tualatin Basin Riparian Restoration for Carbon Sequestration and Temperature Control**

\$80 million to build artificial chillers + \$50 annual O&M

Vs

\$6 million in Green Infrastructure that:

- a. creates local native green industries;
- b. sequesters 100,000 metric tons of carbon;
- c. improves fish and wildlife habitat ; and
- d. costs and with \$50,000 for O&M





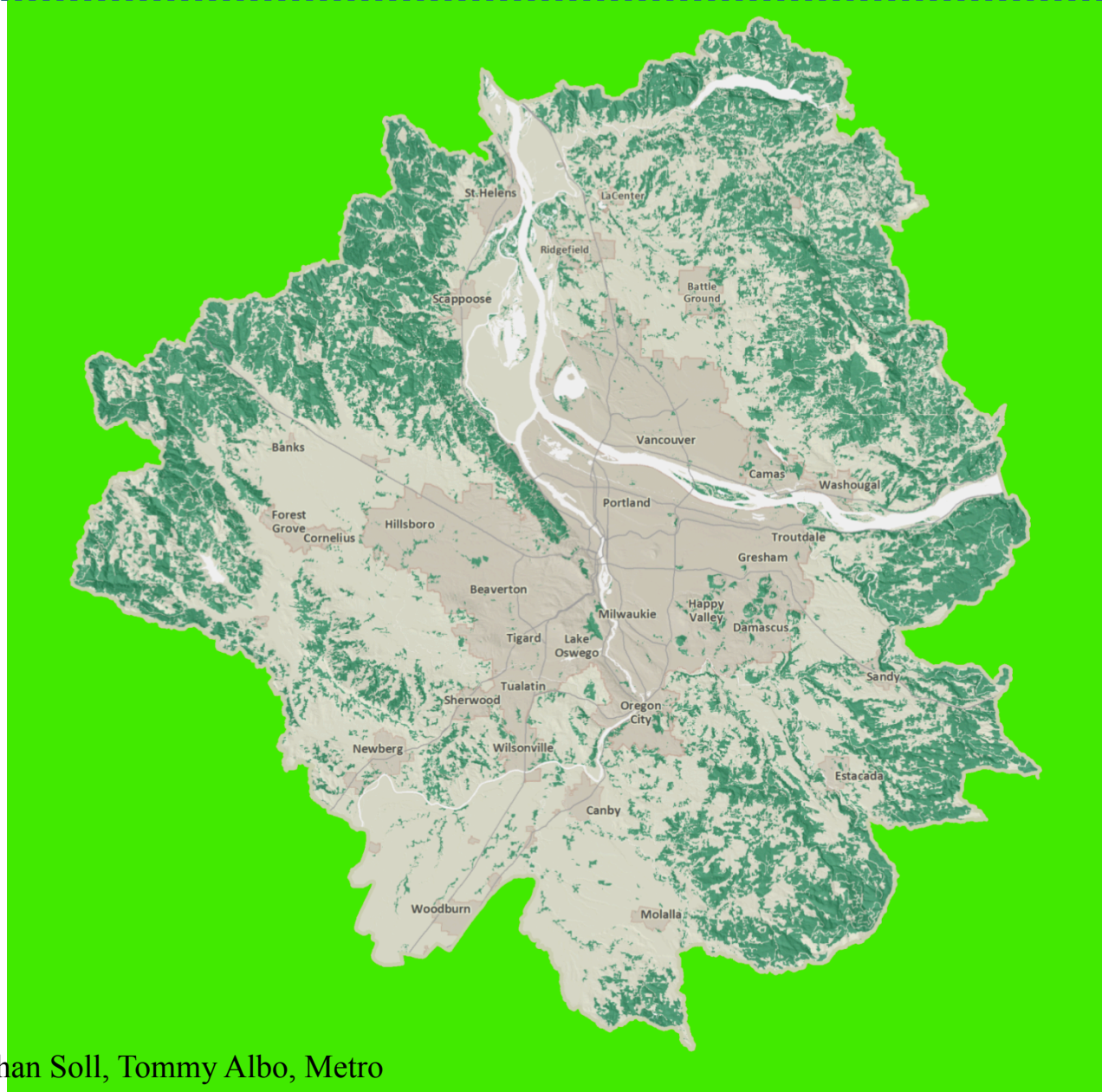
# You can't prioritize what isn't mapped

---

5 meter pixels



# Top 30% high-value habitat: Intertwine region

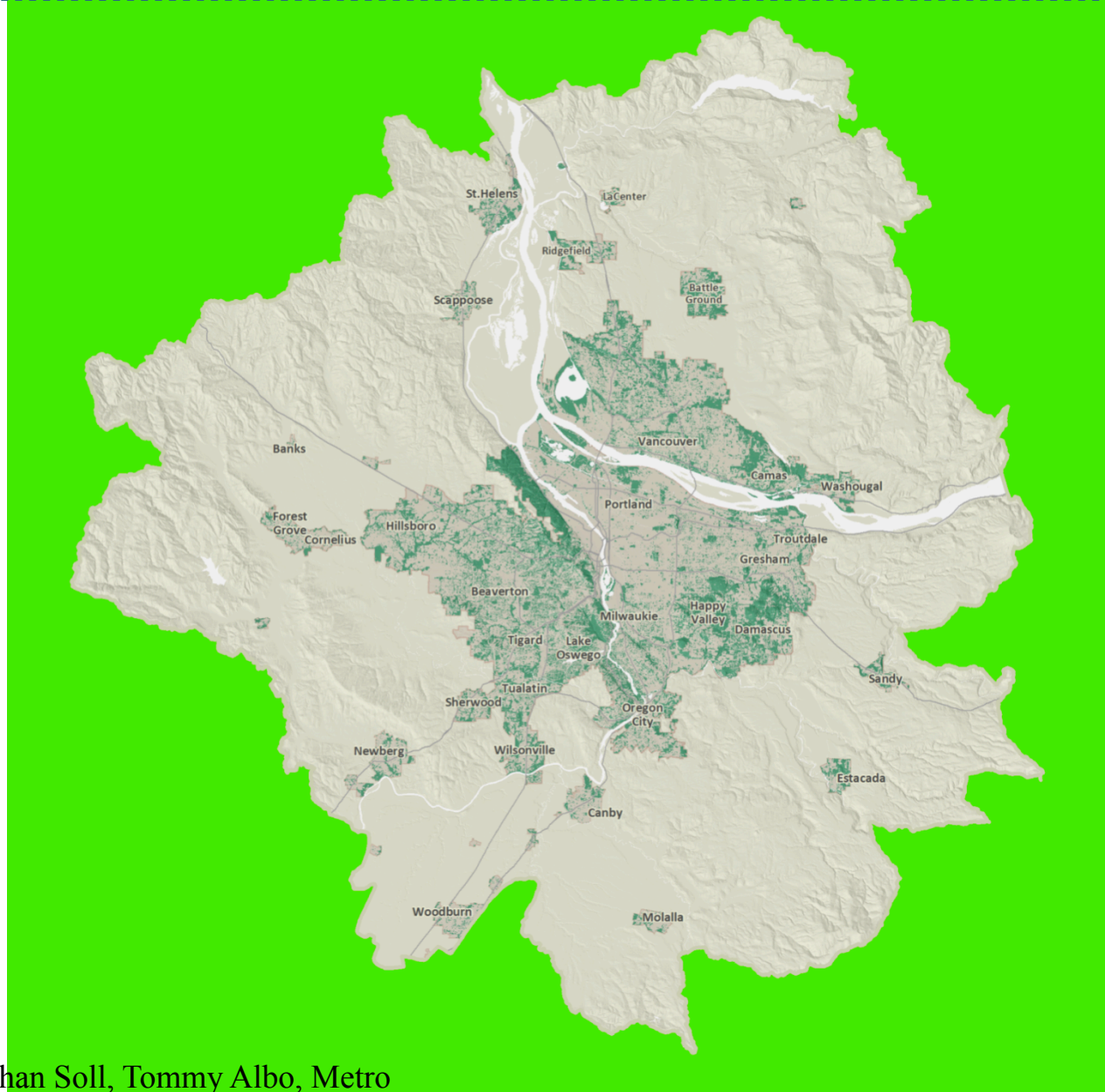




# 5,000 acre Forest Park



# Top 30% high-value habitat: Urban areas only





# 40,000 Sqare Foot Tanner Springs



# Barriers

Bias against urban natural resources

Anti-urban bias

Priorities: Parks and Natural Resources vs “Essential” Services

Politics of Utility Fees/Rate Revolt

Engineers vs Green Infrastructure

Capitalizing Green Infrastructure

Lack of O & M Funding

Resistance of Agencies and Some NGOs to Value Green Infrastructure and Urban Nature

Need More Ecosystem Services Research and Localization

# Scaling Up

Regionally: The Intertwine and The Intertwine Alliance

Bioregionally: Cascadia Network

Nationally: Metropolitan Greenspaces Alliance

# Metropolitan Greenspaces Alliance



BAY AREA

OPEN SPACE COUNCIL



Chicago  
Wilderness



SOUTHEASTERN  
WISCONSIN  
WATERSHEDS  
TRUST, INC.



HOUSTON  
WILDERNESS