

An aerial photograph of Seattle, Washington, taken from an elevated position. The city's skyline is visible in the lower right, with several prominent skyscrapers. The city is surrounded by green hills and a large body of water, likely the Duwamish River. In the background, a large, snow-capped mountain (Mount Rainier) rises above a layer of low-lying clouds or fog. The sky is a pale, hazy blue.

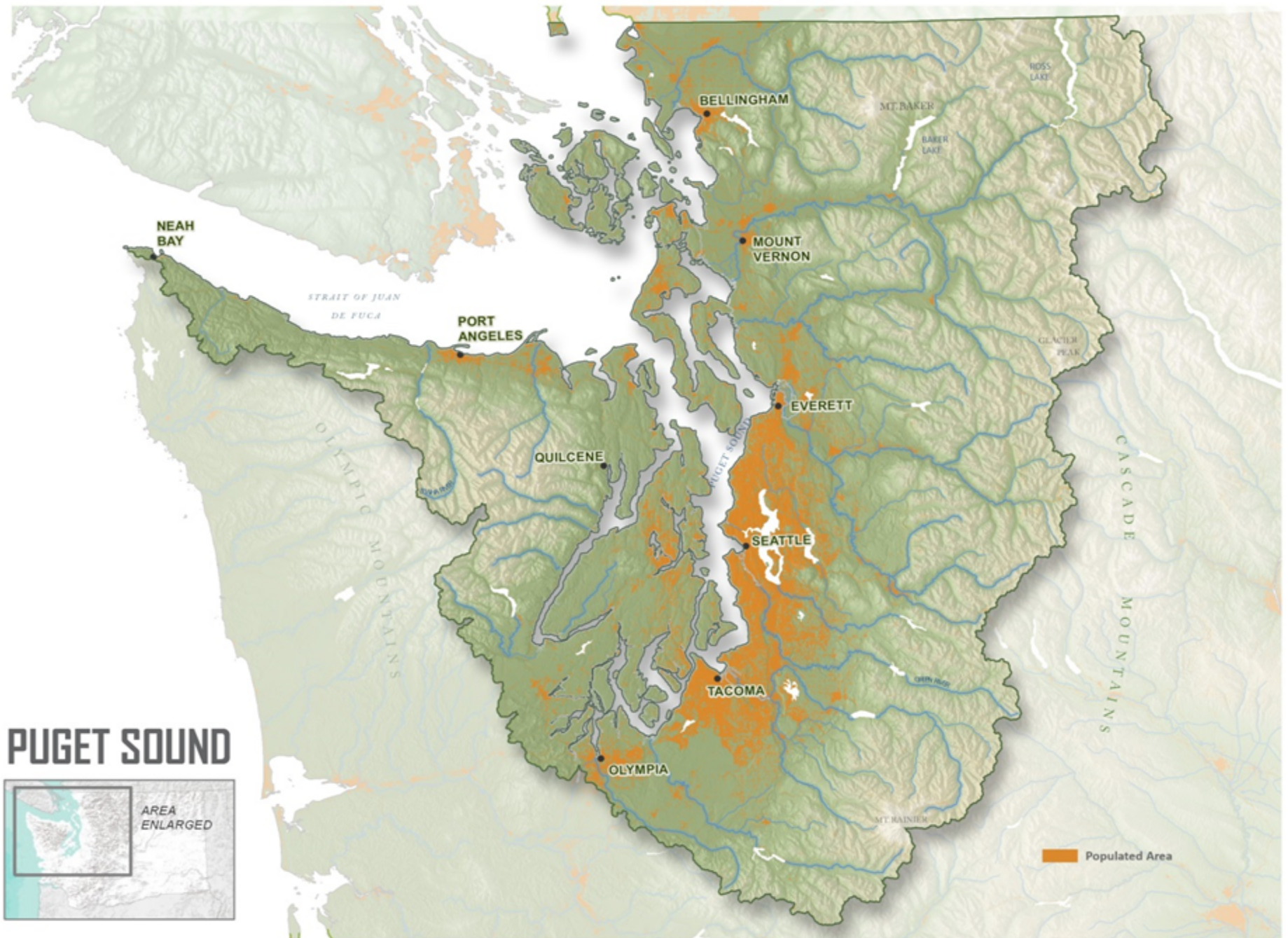
Biocarbon Summit
Floodplains Breakout
Chris Davis, The Nature Conservancy
June 2013



South Fork Skagit River

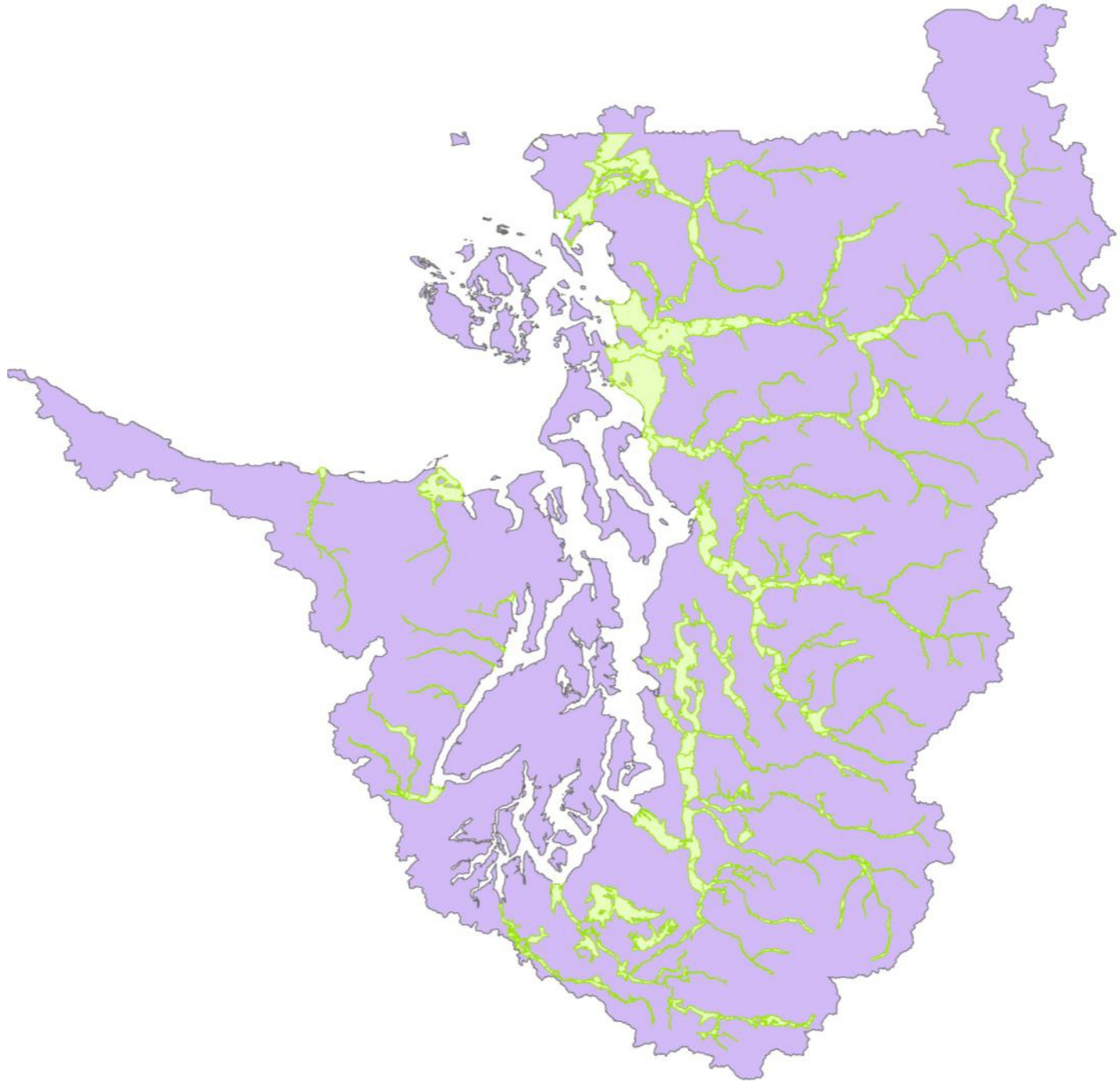
Area to be restored
at Fisher Slough





PUGET SOUND

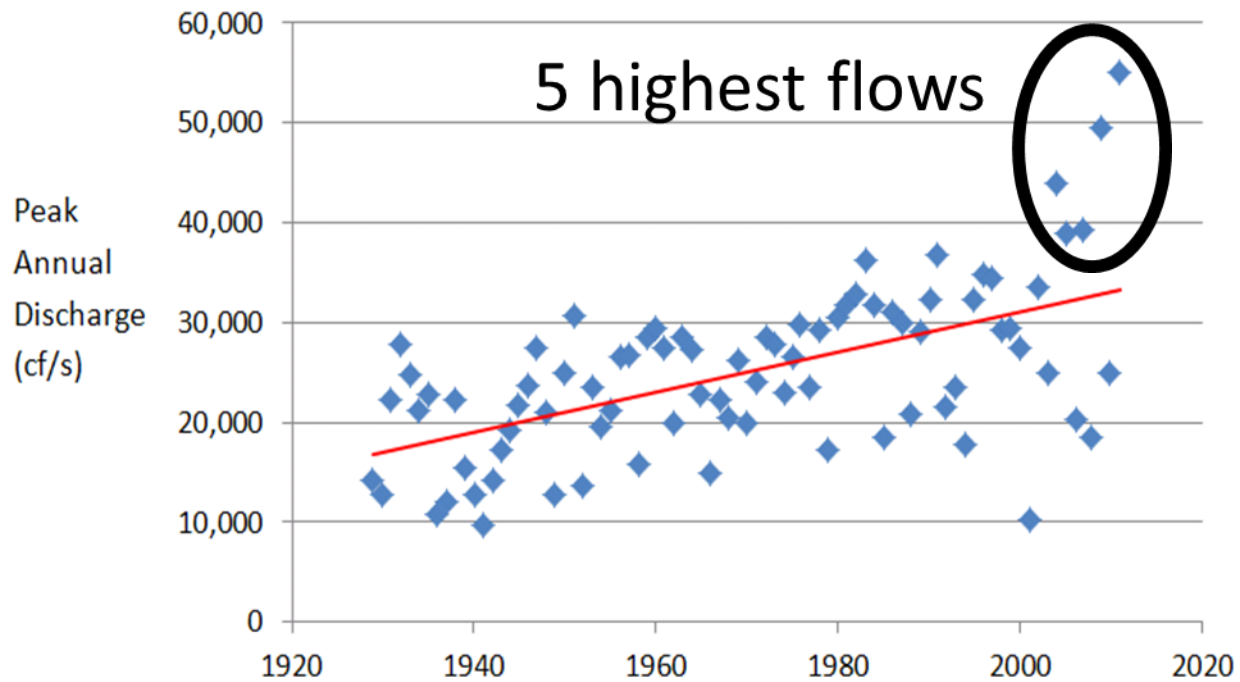








Stillaguamish Annual Peak Flows



PRIGGEE @ WWW.MILTPRIGGEE.COM

SKAGIT VALLEY HERALD



Stillaguamish Flood: January 7, 2009







3 Barriers

Business Case
Implementation Funding
Coordinated Investment

“If 100 years from now there are fish, farms, and shorebirds in this valley, then everybody wins”

Farmer Dave

